



Leadership Inflection Point: Barriers & Opportunities for Radical Collaboration and Collective Action to End Alzheimer's and All Other Dementia

Presenters

Mollie O'Brien, MA, Chief Strategy Officer
Sherry Sanchez Tibbetts, JD, Director Diversity, Equity & Inclusion
Lisa Groon, BS, Health Systems Director
Beth McMullen, BA, Vice President Government Affairs



1

Agenda

- (5 min) Introductions, Learning Objectives, Poll
- (25 min) How we are trying to collaborate differently to drive new strategies or outcomes
- (13 min) Break Out Groups
- (15 min) Report Out & Discussion
- (2 min) Closing

2

Learning Objectives

- Describe how the Alzheimer's Association is working to accelerate global research, drive risk reduction and early detection, and maximize quality care and support.
- In the context of a global public health crisis, explore barriers and opportunities for radical collaboration and cross-sector collective action.
- Explore how health systems, public health and public policy can collaborate across sectors to advance system-level changes needed to end Alzheimer's and all other dementia.

3

Our Mission

To eliminate Alzheimer's disease through the advancement of research; to provide and enhance care and support for all affected; and to reduce the risk of dementia through the promotion of brain health.

4

What does Radical Collaboration mean to you?

(enter your answer in the chat)

5

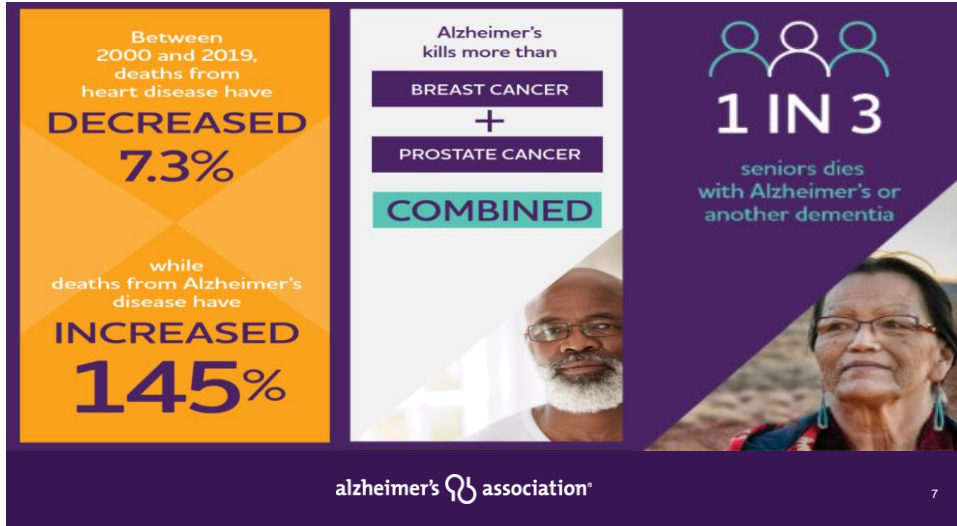
What is Radical Collaboration?

“Collaboration is nothing new. Yet too often it involves the same people addressing the same problems in the same ways and expecting different outcomes. Radical collaboration suggests that diversity of ideas, experiences, cultures and socio-economic backgrounds is not only a good idea, it is fundamental to new ways of understanding and addressing old problems (creativity).”

Jess Roberts
 Founder & Lead
 CULTURE OF HEALTH BY DESIGN
 Minnesota Design Center
 University of Minnesota
robe0412@umn.edu
 651.503.4584

6

The Burden of Alzheimer's & Other Forms Dementia on Individuals and Families Continues to Grow



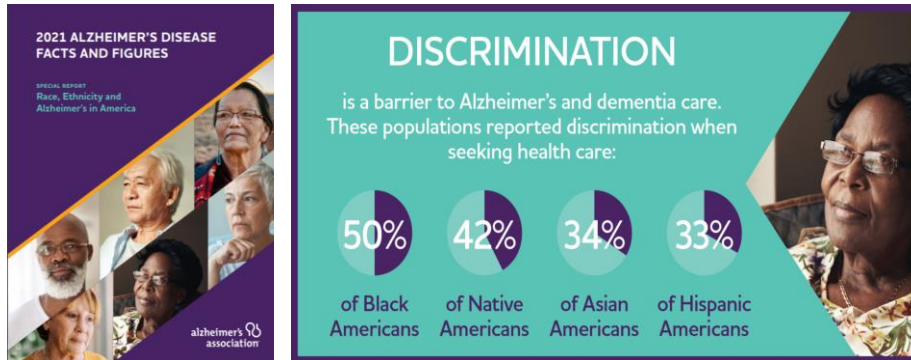
7

Dementia is a Key Driver of High Utilization & Cost



8

BIPOC Communities are Disproportionately Impacted



9

Strategic objectives



10

The Solution Requires Radical Collaboration



alzheimer's  association® 11

11

Sherry Sanchez Tibbetts, JD
Director of Diversity, Equity & Inclusion

alzheimer's  association® 12

12

Thoughtful
Engaging Trust
Community
Cooperation
Partnership
Common-vision
Deliberate
Intentional
Collaboration
Solution



13

Chapter Challenges

- Working Outside of Our Comfort Zone
- Lack of Connections in Diverse Communities
- Capacity and Bandwidth



14

Alzheimer's Community Forum Goals

- **Understand** current service **reach**.
- **Listen** to the experiences of the community.
- Identify **needs**, gaps in resources, and opportunities.
- **Empower** regions through establishing a network of support for individuals impacted by memory loss, dementia, and Alzheimer's disease through leveraging **volunteer** resources and **community** partnerships.



Partnership Overview

The Alzheimer's Association® and the African Methodist Episcopal Church (AME) are excited to announce our national partnership to better reach and engage the African American community with important information relating to Alzheimer's detection, diagnosis, care, treatment, research and advocacy. Together, we have been deep in the planning stages for a successful nationwide collaboration. Both organizations are excited to formally communicate the partnership launch and our activities!

CDC's recommendations to eliminate health disparities

- Improve cultural competence.
- Improve patient/provider communication.
- Increase access to quality health care.
- Improve data.



17

Lisa Groon, BS
Health Systems Director

18



The Association works with health systems and clinicians to:

- Improve health outcomes
- Enhance the patient experience
- Reduce the burden on clinicians
- More effectively manage the cost of care



Three R's to Collective Action:

1. Right People
2. Right Room
3. Right Questions

Beth McMullen, BA Vice President Government Affairs

23

Radical collaboration in public policy making?



24

How do we influence public policy?

Government Affairs



Advocacy



Collaborative Process – Example

- Identify common vision
- Set clear goals
- Invite all to discussion
- Allow for equal voice
- Recognize difference of perspectives
- Focus on consensus



2019 Assisted Living License Bill Signing

Embrace Radical Collaboration

- Identify common vision ➤ *Indicate where visions diverge.*
- Set clear goals ➤ *Ensure equity for all.*
- Invite all to discussion ➤ *Seek out voices that are missing*
- Allow for equal voice ➤ *Require for equal voice*
- Recognize different perspectives ➤ *Acknowledge and identify*
- Focus on consensus ➤ *Ensure it works for all.*

Radical collaboration in public policy making!



Breakout Session

29

Report Out & Discussion

30

Closing